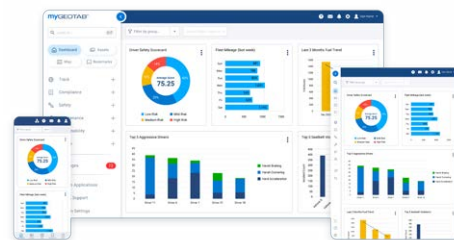
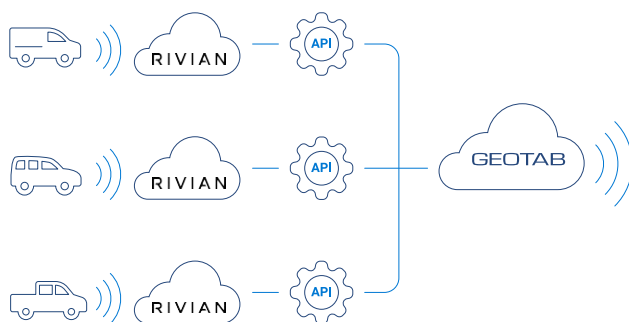


# Geotab's advanced fleet management is now integrated with Rivian EV data. Powerful insights for data-driven decision making.



Lead your Rivian electric vehicles into the future with the powerful open fleet management platform from Geotab. View and manage all your vehicle data from one easy-to-use AI-driven fleet management platform for quicker and better-informed decision-making.

Rivian electric vehicles<sup>1</sup> are pre-installed with telematics devices to monitor vehicle performance, vehicle health, software updates and more. Accessing Rivian vehicle data via the MyGeotab platform gives you the power of insights to make data-driven business decisions. Manage your fleet using data that includes GPS tracking, road speed, charging status, tire pressure, seatbelt, airbag, battery state-of-charge, warnings/alerts and more.



One unified platform

## Key features:



**One open integrated platform:** EV data and many more, along with GPS tracking, road speed, provide actionable insights on Geotab's unique open platform, MyGeotab.



**Expand your telematics capabilities:** Fleets can add further telematics capabilities with hundreds of Marketplace solutions, including software add-ins and hardware add-ons.



**Flip the switch:** Immediate, remote and contactless activation without the need for a professional installer.



**Cost advantage:** No additional hardware or installation expenses, saving time and money.



**Access to Rivian vehicle data:** Collect rich data on vehicle location, road speed, trip distance, safety data and EV signals from Rivian vehicles to improve and optimize vehicle management for safety and productivity.



**Maximize vehicle uptime:** Maximize uptime with pre-installed telematics on Rivian vehicles along with integration of MyGeotab's seamless fleet management features to ensure vehicles operate at their peak.



**An integrated telematics solution powering insights:** Geotab's telematics industry experience, combined with Rivian's vehicle performance data, deliver near real-time insights through the work of innovative teams of expert engineers and data scientists.

Contact us to learn more:

email: [OEMLD@geotab.com](mailto:OEMLD@geotab.com) | toll-free: 1-800-397-7102

GEOTAB®



### Operations

- Fleet overview (ex. Watchdog report, asset utilization)
- Maintenance planning and fleet benchmarking
- Tire pressure monitoring and warning indicators (DTCs)



### Productivity

- Detailed GPS tracking
- Trips and activity reports
- Support reliable connectivity with heartbeat data
- Acceleration data for better vehicle performance



### Sustainability

- Monitor charging time and range efficiency
- Near realtime charging status, state of charge (SOC) and plug status
- Monitor vehicle charging status
- Route optimization



### Safety

- Door lock and window status for vehicle safety and authorized entry
- Risk and safety reports, along with airbag event data
- Track driving, seatbelt status and speed data



### Compliance

- Personal and business vehicle use reporting



### Expandability

- Software development kit and APIs



The power of Geotab’s telematics technology – along with Rivian’s electric mobility solutions – equips fleets with a turnkey connectivity solution that maximizes electric vehicle efficiency, reduces downtime and increases productivity and efficiency. Collect and monitor rich, high-quality data from Rivian’s range of models, all with end-to-end data protection. With ready-to-go factory-installed telematics and an integrated MyGeotab fleet management platform, reaching a new level of connectivity couldn’t be easier.

<sup>1</sup> Please refer to the partner guide for the list of compatible vehicles.